

**PRINT MAX**  
**COMPUTER SUPPLIES**

IT Security, Cloud & Backup Products  
Authorized RE-SELLER of Clouds Dubai  
in U.A.E

## VIRCOM MODUSCLOUD – A COMPLETE EMAIL SECURITY SOLUTION

- Email Security Solution providing Advanced Threat Protection (ATP), DLP, continuity, encryption & archiving to stop business email compromise, domain and email spoofing & advanced malware.
- Comes in 4 packages – Beginner, Business, Advanced & Professionals
- Starting price at \$2/user/month
- Powered by Proofpoint
- Cost-effective alternative to Mimecast & O365.
- Can protect O365 mailboxes.

	Beginner	Business	Advanced	Professional
Antivirus/AntiSpam	✓	✓	✓	✓
Imposter Email protection	✓	✓	✓	✓
Reporting	✓	✓	✓	✓
Content & Outbound Filtering	✓	✓	✓	✓
Zero-Hour Threat Detection	✓	✓	✓	✓
Data Loss Prevention (DLP)		✓	✓	✓
URL Defense (Sandboxing)		✓	✓	✓
Attachment Defense (Reputation)		✓	✓	✓
Attachment Defense (Sandboxing)			✓	✓
Email Encryption			✓	✓
Social Media Account Protection			✓	✓
Emergency Inbox	30 Days	30 Days	30 Days	30 Days
Email Spoofing	30 Days	30 Days	30 Days	30 Days
Instant Replay		30 Days	30 Days	30 Days
Tamper-Proof and Offsite				✓
Search and eDiscovery				✓
Unlimited Storage (10 Yr Archive)				✓

## MANAGED EDR

- **Managed EDR with 24x7 Security monitoring & guaranteed Ransomware roll-back**
  - Managed endpoint Detection & Response
  - Starting price at \$7/user/month
  - Can start with 1 Server/user
  - Investigate, Isolate & Recover
  - Management built for endpoints
  - Suspicious Activity Monitoring
  - Guided Investigation
  - Ransomware Rollback

# EKRAN SYSTEMS — USER ACTIVITY MONITORING

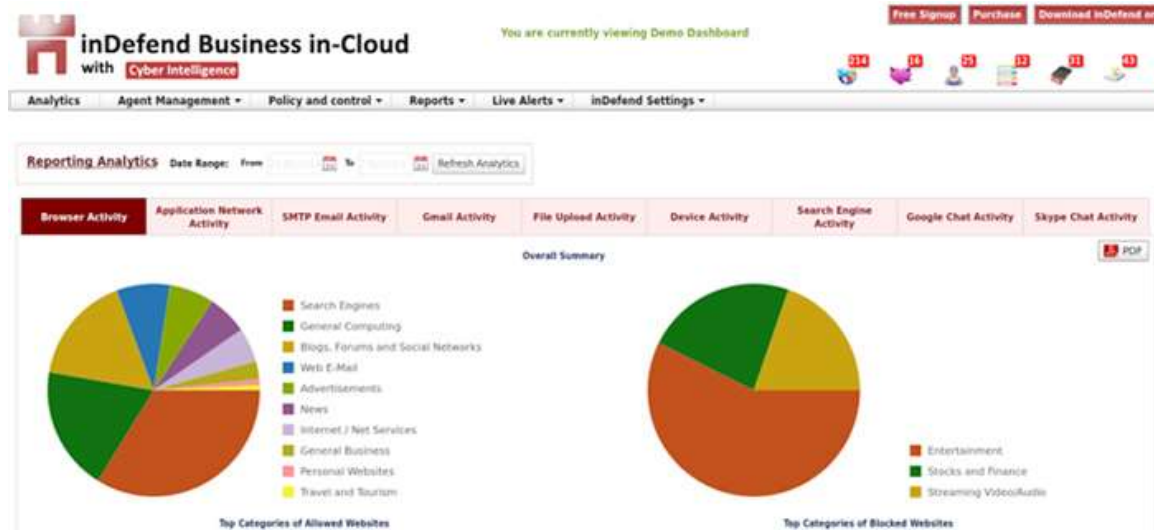
- Employee Monitoring
- Server Monitoring
- Sessions (Video) Recording
- USB monitoring/blocking
- Privileged User Monitoring
- 3<sup>rd</sup> party Vendor Monitoring

Activity time	Activity title	Application name	URL	Text data	Alert/USB Rule
10:50:20	New Tab - Google Chrome	chrome.exe	facebook.com		[Normal] [Default] Social networks
10:50:34	(2) Facebook - Google Chrome	chrome.exe	www.facebook.com		
10:51:26	forum - iasha2@april08.com - Outlook	OUTLOOK.EXE			[Critical] [Default] Desktop email clients
10:57:59	Running applications	explorer.exe			
10:57:59	Calculations: docx - Word	WINWORD.EXE			[High] Mixed
10:58:43	YouTube - Google Chrome	chrome.exe	www.youtube.com		[Normal] [Default] Online video
11:34:39	New Tab - Google Chrome	chrome.exe	www.youtube.com		
11:34:40	New Tab - Google Chrome	chrome.exe	www.youtube.com		
11:34:40	New Tab - Google Chrome	chrome.exe	www.youtube.com		
11:34:41	New Tab - Google Chrome	chrome.exe	www.youtube.com		
11:34:41	New Tab - Google Chrome	chrome.exe	www.youtube.com		
11:34:42	New Tab - Google Chrome	chrome.exe	www.youtube.com		
11:34:42	New Tab - Google Chrome	chrome.exe	www.youtube.com		
11:34:43	New Tab - Google Chrome	chrome.exe	www.youtube.com		
11:34:43	New Tab - Google Chrome	chrome.exe	www.youtube.com		

- ✓ Affordable user monitoring solution for enhanced cyber security. Comes with perpetual license (one time cost)
- ✓ Record all terminal, remote, and local user sessions and alert security personnel to any suspicious events.
- ✓ Record sessions based on : Name of launched application, The title of the active window, Entered URL, Text entered via user's keyboard
- ✓ Watch Live or Recorded Video - Searchable videos that takes minimal space to record

# INDEFEND — EMPLOYEE MONITORING & DATA LEAKAGE PREVENTION

- Insider Threat Response System
- Endpoint Data Leakage Prevention
- Intellectual Property Theft protection
- Web Content Filtering
- Employee Behavior Monitoring
- Workplace Productivity Monitoring
- Application Monitoring/Whitelisting



- ✓ Proactively analyzes and facilitates the employers to detect and analyze various sensitive activities performed by employees by monitoring Browser Activities, Application Usage, USB devices and time based reports.
- ✓ Protect organization's confidential data against all Insider Threats and Data Leakage. Allows stealth mode deployment.
- ✓ Track illegitimate activities of employees – supports both on-prim & cloud deployments

# TRUGRID SECURERDP — WORK FROM HOME SOLUTION

- **Implement the safest and fastest Remote Desktop solution - Stop the spread of ransomware across VPN tunnels**
- ✓ Multi tenant dashboard for managing multiple customers
- ✓ Easiest to install solution for hundreds and thousands of users
- ✓ Safely connect customers to their Windows computers from anywhere
- ✓ Eliminate cost of multiple add-ons (VPN+MFA+RDP) with one solution
- ✓ Secure RDP and VDI without RDS Gateway or open firewall ports
- ✓ Give employees session privacy, unlike remote control software
- ✓ Replace expensive software like LogMeIn, TeamViewer, & GoToMyPC
- ✓ Protect computers from RDP hacks while meeting FBI recommendations
- ✓ Help organizations find out if hackers have stolen their logins
- ✓ Help companies meet PCI / HIPAA compliance for exposed RDP Ports



# TRUGRID DISK ENCRYPTION

## ➤ Easy & Cost-effective Management of BitLocker Disk Encryption

- ✓ Secure Windows PC & laptop data from theft or loss
- ✓ Encrypt Windows computers with and without TPM chips
- ✓ Encrypt no-TPM computer disks with preboot password (no USB needed)
- ✓ Meet HIPAA, PCI, and other compliance needs with disk encryption
- ✓ Implement encryption without the need for GPO or scripting
- ✓ Enforce encryption for non-domain joined computers
- ✓ Enforce encryption regardless of computer location
- ✓ Secure company data for employees who travel for work
- ✓ Maintain company reputation with increased data privacy and security

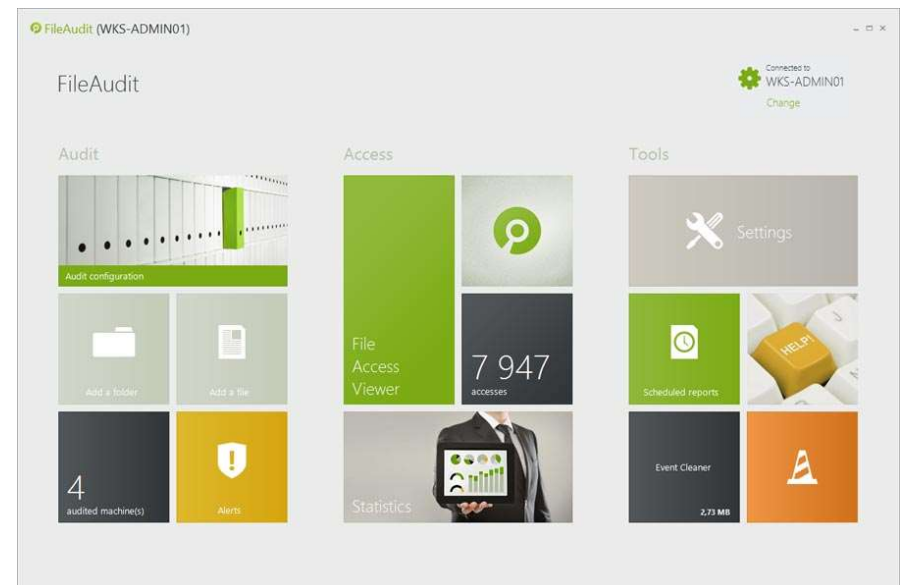
The screenshot displays the TruGrid Device Management interface. At the top, there's a navigation bar with 'TruGrid' and a user profile icon. Below it, a sidebar contains icons for 'WORKSPACE', 'COMPANY MANAGEMENT', and 'CUSTOMER MANAGEMENT'. The main content area is titled 'Device Management' and includes a search bar, a 'Device Count' of 6, and buttons for 'COMPLIANCE REPORT', 'ENROLLMENT FILE', and 'WATCH VIDEO'. A table lists devices with columns for Hostname, OS Version, Agent Version, Date Added, Last Connected, External IP, Internal IP, and Installation Status. The table shows several devices, some with encryption status indicators (e.g., 'Encrypted 2').

Hostname	OS Version	Agent Version	Date Added	Last Connected	External IP	Internal IP	Installation Status
ALL DEVICES							Installed
Server 2016	Server 2016	1.1.0.1	12/6/2018	12/6/2018			Pending Delete
10 Pro 64 bit	10 Pro 64 bit	1.1.0.1	12/5/2018	12/6/2018			Deleted
Server 2016	Server 2016	1.1.0.1	12/6/2018	12/6/2018			Deleted
10 Pro 64 bit	10 Pro 64 bit	1.1.0.1	11/20/2018	12/5/2018			Installed
10 Pro 64 bit	10 Pro 64 bit	1.1.0.1	12/5/2018	12/6/2018			Deleted
10 Pro 64 bit	10 Pro 64 bit	1.1.0.1	12/5/2018	12/6/2018			Installed

# FILEAUDIT — MONITOR SHARED FOLDERS/FILES ON FILE SERVERS & CLOUD

## ➤ Windows File Server Auditing

- ✓ Track, audit, report, alert & respond on all access to files and folders on Windows Servers.
- ✓ Monitor, record & alert file read/write/delete accesses (or access attempts), ownership changes, and permission modifications in real time.
- ✓ Significantly reduce the workload related to monitoring access to sensitive files and folders.
- ✓ File Auditing to data stored in the cloud - OneDrive, Google Drive, Dropbox & Box

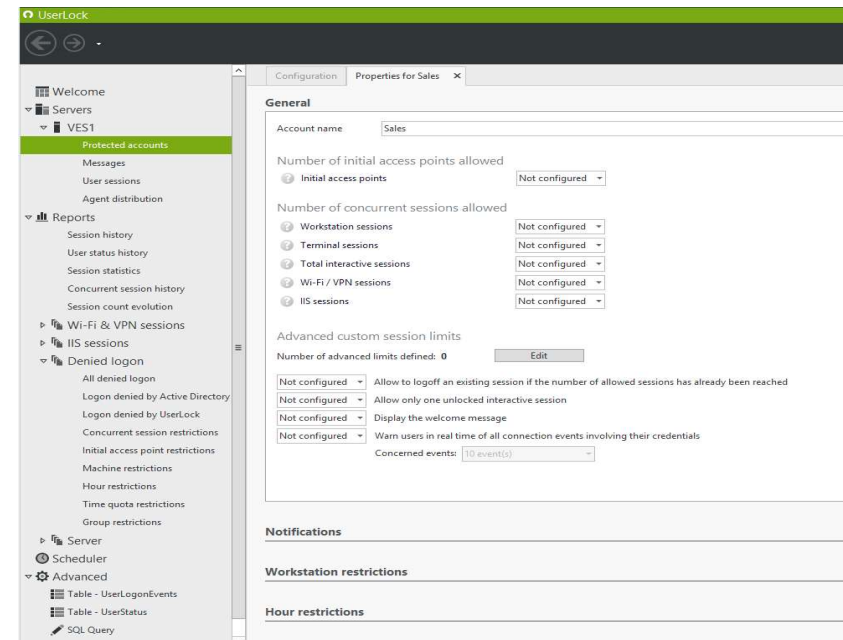




# USERLOCK — LOGON SECURITY FOR ACTIVE DIRECTORY USERS

➤ *UserLock reduces the risk of external attacks, internal security breaches and compliance issues*

- ✓ **CONTROL & PROTECT** :- Set restrictions using the contextual information around a user's logon, to help verify all user's claimed identity, and authorize, deny or limit network access.
- ✓ **DETECT & RESPOND** :- Real-time monitoring and risk detection tools immediately alert on suspicious logon activity so you can take action quickly.
- ✓ **AUDIT & REPORT** :- A centralized audit on all network logon events provides detailed reports to track down security threats, support forensics and prove regulatory compliance.
- ✓ **2 FACTOR AUTHENTICATION** :- Enable customized, two-factor authentication on Windows logon and RDP connections.
- ✓ **WORKING HOURS REPORT** :- Manage and react to employees' attendance, overtime thresholds, productivity and suspicious access times.



# CIONSYSTEMS — COMPLETE AD MANAGEMENT SOLUTION

## ➤ Active Directory management made easy

- ✓ **Active Directory Manager Pro** - Manage your AD seamlessly with a web-based Solution
- ✓ **Active Directory Reporter** - Comprehensive, easy to use and cost-effective Active Directory reporting Tool with over 200 out-of-the-box reports
- ✓ **Active Directory Change Notifier** - Proactively tracks and reports on any changes that occur within your AD domain
- ✓ **Active Directory Recovery Manager** - Quickly and Accurately Backup and Recover Your Active Directory objects
- ✓ **Active Directory Group Policy Management (GPO Manager)** - The easiest, most efficient way to manage your organization's Active Directory Group Policies
- ✓ **Enterprise Self Service** - Active Directory Password Reset Tool
- ✓ **Microsoft O365 and Azure AD Management** - Data migration and archiving solution to Manage your cloud office365 / AD Azure objects with on premises directory.
- ✓ **Cloud Identity and Minder** - Azure Active Directory (Azure Ad) & OpenLdap Management

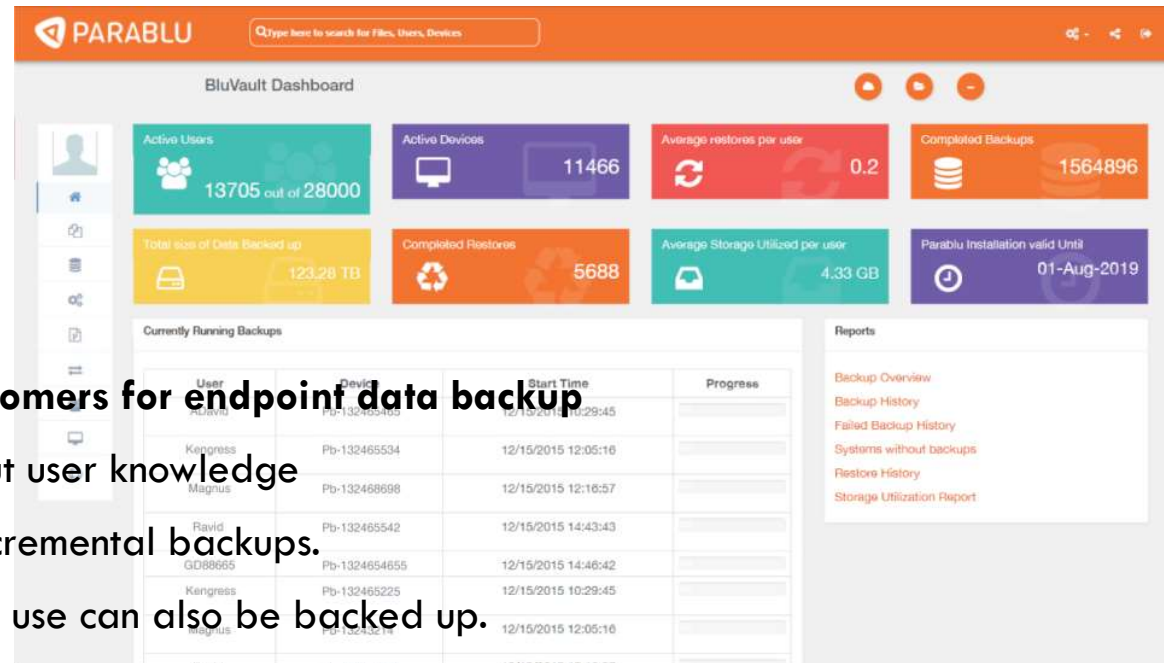
# VEMBU BDR SUITE — BACKUP & DISASTER RECOVERY

➤ Protect your Virtual, Physical, Cloud workloads and SaaS Applications

- ✓ Backup & Replication for VMware VMs & Hyper-V
  - ✓ Disk-Image Backup for Windows Servers & Workstations
  - ✓ File & Application Backup for Windows, Linux, and Mac
  - ✓ Backup for AWS EC2 Instances, Office 365 & G Suite
  - ✓ **Business Continuity** :- Minimize your downtime - quick VM recovery, instant disk mounts, instant file restores -RTO of < 15 min.
  - ✓ **High Availability** :- Replicate your production VMs to DR site and perform failover & failback.
  - ✓ **Disaster Recovery** :- Ensure additional data protection by replicating your backup data to offsite/Vembu Cloud.
  - ✓ **Scalable & Reliable** :- Supports scale-out storages ensures backed up data is recoverable with Boot check, Mount check, & Integrity.
  - ✓ **Centralized Monitoring** :- Monitor all your backups jobs and their status from a single console – Vembu BDR360.
  - ✓ **Near CDP** :- Automate your backup & replication every 15 mins, every few hours or once a day.
- **Cost-effective alternative to Veeam & Acronis backup**
  - **Windows Server Image Backup + Offsite DR for \$98**

# BLUVAULT — SECURE ENDPOINT BACKUP SOLUTION

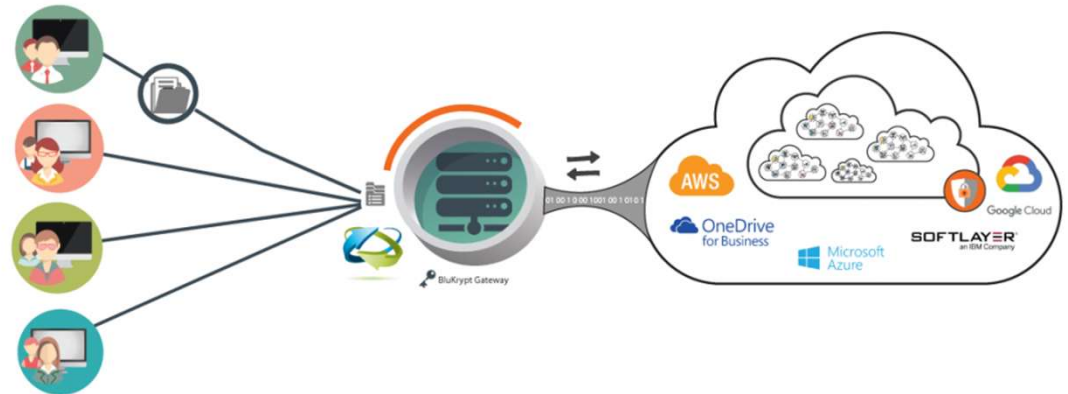
- Fully encrypted backup for Windows, Mac and Linux Workstations
- Secure Large File Transfer
- ✓ Allows multiple versions
- ✓ Accomplish quick Data Restores
- ✓ Secure & Fast Large File Transfer solution
- ✓ Also provides O365 & SharePoint backup
- ✓ **70% cost savings for O365 & G Suite customers for endpoint data backup**
- ✓ Supports stealth mode deployment – without user knowledge
- ✓ Allows initial full backup and subsequent incremental backups.
- ✓ Snapshot based backups ensure that files in use can also be backed up.
- ✓ Comes with deduplication, compression, network & CPU throttling



# BLUSYNC — SECURE FILE SYNC & SHARE SOLUTION

➤ Replace legacy SecureFTP based solutions with an Enterprise-class alternative

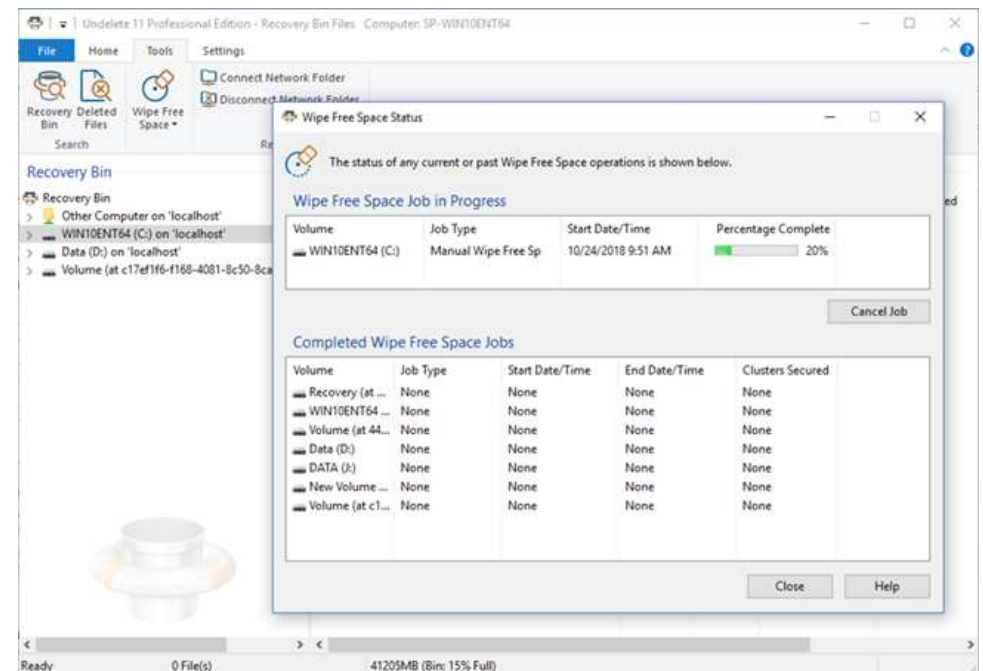
- ✓ Secure Enterprise File Sync & Share solution
- ✓ Seamless End-user Collaboration
- ✓ Mini-clouds
- ✓ Secure Storage container
- ✓ Share Files Securely
- ✓ Overcome Cloud Storage Restrictions
- ✓ One-click secure sharing
- ✓ Search capability
- ✓ Support for browsers and agents
- ✓ Elastic architecture



# UNDELETE — FILE RECOVERY FOR WINDOWS SERVERS & WORKSTATIONS

➤ The world leader in instant file recovery with up-to-the-minute protection

- ✓ Enables easy recovery of deleted and overwritten local and network files
- ✓ Secure Delete Electronic File Shredder - files that are purged from the recovery bin are overwritten with random data. Ability to securely delete files immediately.
- ✓ Wipe Free Space overwrites a volume's free space providing a complete solution of erasing secure data.
- ✓ Recovers previous or overwritten versions of Word, Excel, PowerPoint CAD, Photoshop and other files
- ✓ Instantly recovers files in virtual environments
- ✓ Central management through Undelete Server



# BLUEDOG — OFFICE 365 & AZURE SECURITY MONITORING

## ➤ Protecting Microsoft Office 365 and Azure Directory

- ✓ Monitor remote devices and identify unusual activity such as suspicious logins, downloads or phishing emails
- ✓ Spot users logging in from unusual locations and other problems that would be missed by anti-virus solutions and firewalls.
- ✓ With a team of experts on hand 24/7.
- ✓ Monitor Employees working from home
- ✓ Detect Cloud abuses from O365 or Azure AD

Microsoft 365 Usage Information



Unusual Login Locations



Exchange Mail Login Locations



Sharepoint Activity



Account Operations



E-mail Detections

No data found for this time period.

Exchange Activity



Security Center Issues

No data found for this time period.



# WATCHTOWER365 – SOC IN A BOX

- Cost effective Managed Security Services offering with 24X7 monitoring & Incident Response. **Security Operations Centre (SoC) in a Box** provides customers with SIEM, Network Intrusion Detection, Vulnerability Assessment, Endpoint Protection, Ransomware Rollback & Incident Response without clients having to invest into any of these tools. **Starts at a price of AED 2,500 per month**
- We help organizations to stay secure !!!

## **SMART 365**

- Secure :- Constant & comprehensive cybersecurity
- Monitor :- Efficient & reliable threat monitoring & detection
- Alert :- Prompt and precise Threat reports
- Respond :- Timely Response to incidents
- Troubleshoot :- Triage, investigate & report

## **Features**

- SIEM (Security Information & Event Management)
- Network Intrusion Detection
- Endpoint Detection & Response
- Incident Response
- Forensics



# CLOUDSEK XVIGIL — AI BASED DIGITAL RISK MANAGEMENT

## ➤ An Artificial Intelligence-powered Digital Risk Management enterprise solution

- ✓ **INTERNET MONITOR:-** Provides analytics and actionable intelligence needed to tackle Surface Web, Dark Web, and Deep Web threats.
- ✓ **INFRASTRUCTURE MONITOR:-** Comprehensive security scans and monitors that ensure that your infrastructure, cloud storage, and applications enjoy watertight digital protection.
- ✓ **BRAND MONITOR:-** Round-the-clock brand monitors with fake domain monitoring and rogue app detection.
- ✓ **RISK ASSESSMENT:-** Collects both behavioral and technical threats and rates their business impact.



# OUR IT SECURITY SERVICES

We offer below IT Security services.

- VA/PT (Penetration Testing)
- Cloud Migration & Optimization
- Source Code Review
- Digital Forensics (Incident Response)
- Digital Risk Management
- SOC as a Service (SIEM, Vulnerability Assessment, Intrusion Detection)
- Virtual CISO – helps with ISO 2700X, PCI DSS, GDPR, HIPAA, NESA compliance
- Security Awareness Training
- Cyber Threat Hunting

For Trade Inquiries:-

For Inquiries please contact:-

Printmaxco

G20, Souq Al Kabeer Building,

Near Al Ghubaiba Bus Station, Bur Dubai, Dubai

Email:sales1@printmaxco.com Phone: 043300414 / 043273626